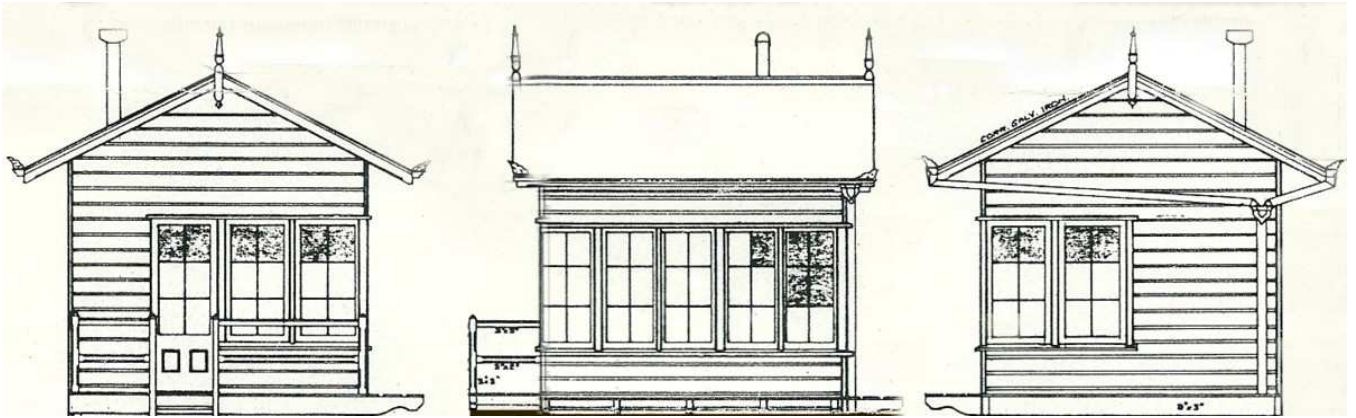


## The BTR Signal Cabin at Amber Junction



The drawing used to model this Signal Cabin depicts Queensland Railways practice.

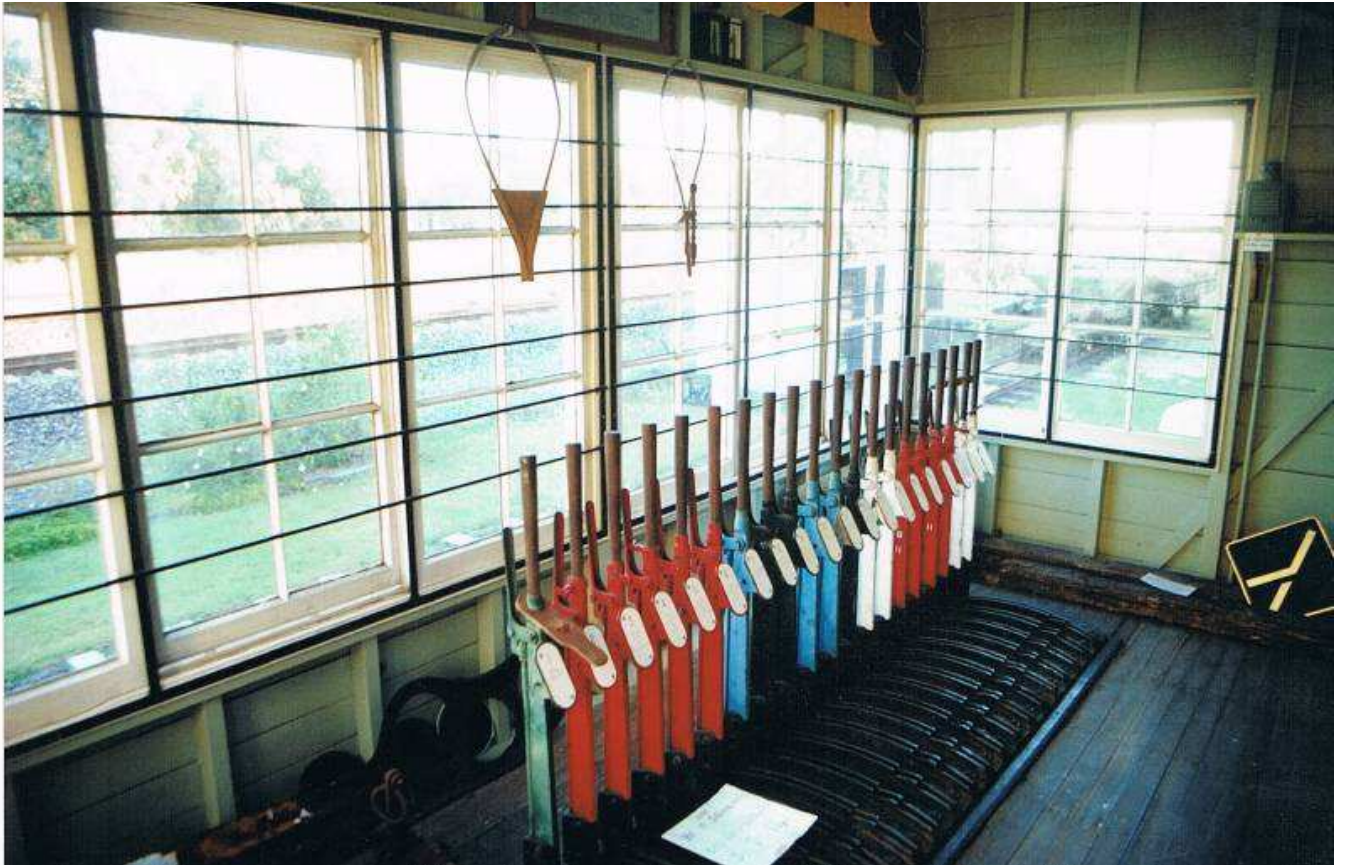
Photos used to 'capture' the character of Queensland Railways Signal Cabins.



**Lowmead Signal Cabin** has a 6 window front, single storey, as used for basis of the model.



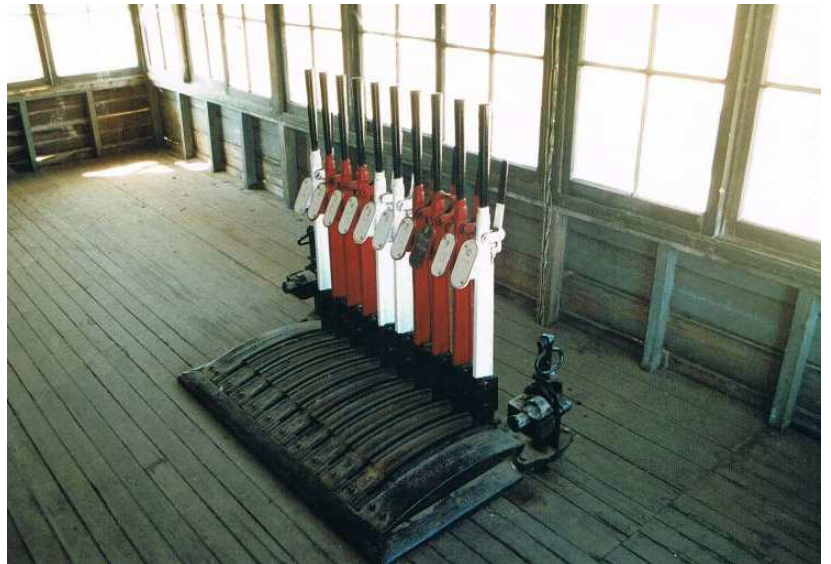
## The BTR Signal Cabin at Amber Junction



Interior view of **Lowmead Signal Cabin** reveals simplicity of inside equipment.



An HO scale model of similar Cabin.



A smaller Lever Frame in the **Chinchilla** Cabin rustic interior.

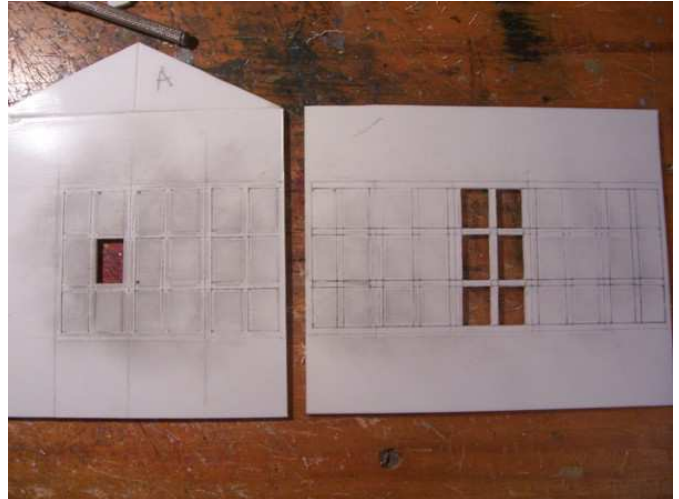


# The BTR Signal Cabin at Amber Junction

The model is made from styrene, 3mm, 2mm, 0.8mm and 0.5mm thick.



Fret work took about 4 minutes per window pane.



This is one of two identical Signal Cabins made at one sitting; the other is at Sundial Junction.



Decided on mirror images of the drawing and to put three (3) windows in end wall.



## The BTR Signal Cabin at Amber Junction

The interior view



The interior view shows the track arrangement diagram on back wall for Amber Junction.

The Signal Cabin in its final location among the ferns, bromeliads and leaf litter.



The Perway Gang step aside for the PB15 crew to exchange the Staff to then proceed.

The Scottie dog attends every train arrival. The jungle setting is ideal for the Cabin staff.